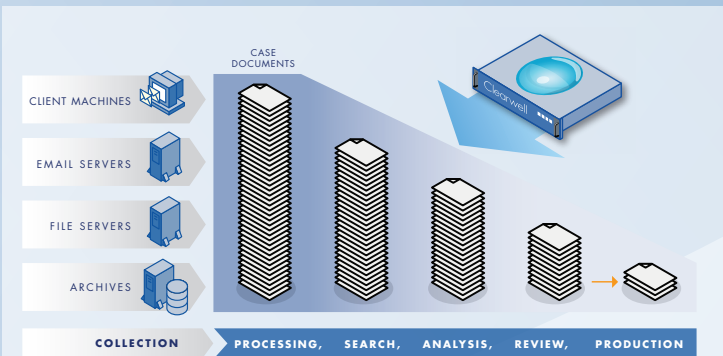


Clearwell E-Discovery Platform[®]

The Clearwell E-Discovery Platform is the industry's leading enterprise-class e-discovery management solution that enables corporations and law firms to manage all of their legal, regulatory, and investigative matters with a single, easy-to-use application. With Clearwell, attorneys, litigation support professionals, and forensics teams accelerate early case assessments, intelligently cull-down data, increase reviewer productivity, and ensure the defensibility of their e-discovery process.

Ranked as a "Strong Positive" (highest ranking) in 2008 and 2009 by Gartner's E-Discovery MarketScope Reports and voted a Top 5 E-Discovery Software Provider by the Socha-Gelbmann survey, Clearwell provides a single, fully-integrated processing, analysis, review, and production platform that reduces the cost, time, and complexity of e-discovery. Whether deployed within the corporation or hosted by a Clearwell certified service provider, the Clearwell E-Discovery Platform:

1. Accelerates document processing, allowing users to gain immediate visibility into case facts and estimate case budget
2. Brings a new level of transparency to e-discovery search, enabling a more collaborative and defensible process
3. Delivers interactive analysis and culling capabilities to prune large datasets to much smaller, more relevant ones
4. Offers an integrated and flexible e-discovery workflow, from processing to review and production, eliminating the costly movement of data across multiple, disparate tools
5. Provides comprehensive case management, auditing, and reporting capabilities, enabling users to monitor case progress in real-time



Clearwell E-Discovery Platform:
Up and running within 25 minutes, Clearwell provides a single, integrated processing, search, analysis, review, and production platform.

Clearwell E-Discovery Platform Features

The Clearwell E-Discovery Platform is an appliance that is up and running in less than 25 minutes. Since the product's web-based interface is extremely intuitive and user-friendly, most attorneys, litigation support professionals, and forensics teams are productive immediately with minimal training. The solution seamlessly integrates with existing collection processes and allows users to consolidate all processing, analysis, review, and production tools into one platform.



1. PROCESSING

Advanced Pre-Processing Filters: Enable users to interactively filter data by custodian, date, strong file type, and file size prior to processing. Clearwell also provides one-click filtering of custom file and “NIST list” items. This filtering significantly reduces downstream processing and review costs.

Pre-Processing Analytics: Visually summarize overall document set characteristics and presents detailed analysis by custodian, timeline, and file type. This rapidly confirms that all case data has been collected and allows for accurate estimation of e-discovery budgets and timelines.

Rapid Processing: Utilizes a new high-performance architecture to process and analyze documents at rates of up to 1 TB per day. Additional appliances can be utilized to meet any scalability requirement.

Robust File Support: Processes and analyzes over 400 different file types from data stores and network file shares including Microsoft Office® and PDF documents, various email formats such as PST, NSF, MBOX, OST, and EMLX, attachments, contacts, calendar items, compressed files, encrypted files, TIFF/text pairs, and Guidance Software® LEF and EO1 files. Images containing text are translated to searchable documents with integrated optical character recognition (OCR) and over 40 types of hidden content are identified.

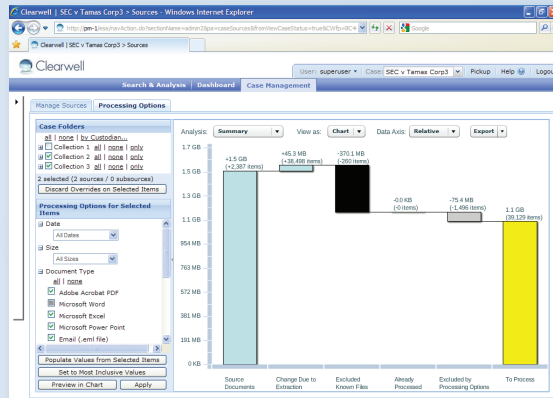
Intelligent De-Duplication: Automatically de-duplicates data across multiple data stores and across the entire data set (versus just custodians) to reduce analysis and review workload. However, every reference to every document is tracked, preserved, and available for export by custodian. Users can “re-dupe” by custodian for export to outside or opposing counsel.

Multi-Language Support: Provides full Unicode compliance and supports English, Western European, Eastern European, Cyrillic, and Asian languages. Clearwell also enables automatic language identification of documents and provides exact document counts by language type across the entire data set.

2. SEARCH

Transparent Search: Delivers a new set of search features that enables a more defensible and collaborative e-discovery search process and enhances the ability to cull irrelevant information.

A. Search Preview: Provides visibility into matching keyword variations prior to running a search. Users can selectively include relevant variations or exclude false positive variations from their search query, thereby adding relevant documents and removing irrelevant documents from search results.



Pre-Processing Analytics: Graphically depict data volume, file types, and time frames of collected data prior to processing.

B. Search Filters: Enable real-time search result filtering for individual queries or variations and allow users to sample the filtered documents to evaluate the effectiveness of their search as recommended by The Sedona Conference®. This also allows for a more iterative and defensible search process.

C. Search Report: Creates a comprehensive report that documents all search criteria and provides detailed analytics of the results for both the overall search and the individual queries within the search. The report tracks search terms that were included and excluded during search preview, providing a defensible audit trail of search refinement decisions.

Multi-Keyword Search: Delivers the ability to run large numbers of queries simultaneously and provides reporting for both the overall search and the individual queries within the search. Large numbers of queries can be tested in minutes, not days, dramatically decreasing the time needed to evaluate the effectiveness of keyword searches.

Variation	Matching Emails	Matching Unique Files
<input type="checkbox"/> falsestart	274	4
<input type="checkbox"/> falsetto	74	5
<input type="checkbox"/> falsie	0	5
<input type="checkbox"/> falsification	1	6
<input type="checkbox"/> falsifications	17	4
<input checked="" type="checkbox"/> falsified	66	4
<input checked="" type="checkbox"/> falsify	27	0
<input checked="" type="checkbox"/> falsifying	28	8
<input type="checkbox"/> falsity	148	5
<input type="checkbox"/> falsom	43	2
<input type="checkbox"/> falsstaff	70	2
<input type="checkbox"/> falsstore	25	4

Search Preview: Provides the list of keyword variations matching a query, allowing users to selectively include and exclude keyword variations.

Advanced Search: Provides the ability to construct advanced searches based on custodian, sender, recipient, direction, subject, attachment name, attachment type, date range, tag, comment, folder, tag history, and processing and production batch. It supports both stemmed and unstemmed (literal) searches for English, European, Cyrillic, and Asian languages and provides power-user capabilities including Boolean, wildcard, fuzzy, and proximity searches.

Auto-Filters: Automatically group search results by metadata fields such as tag, sender domain, sender group, sender name, recipient domain, recipient group, recipient name, document type, custodian, and language type and display exact hit counts across the entire search result set for every filter. Users can narrow search results by simply clicking on a checkbox to cull-down the dataset to the relevant documents for detailed review.

Hit-Highlighting: Highlights search terms in messages, attachments, and files, allowing users to quickly find what they are looking for. Users can simultaneously view highlighted terms from multiple searches to accelerate review (e.g., highlight terms from both privilege and responsive searches).

3. ANALYSIS

Discussion Threads: Utilize patent-pending algorithms to dynamically link together all related messages into chronological threads that capture entire discussions, including all replies, carbon copies, blind carbon copies, and forwards. By tracing the thread, users can quickly identify all the participants and determine who knew what and when, which proves invaluable when performing early case assessments.

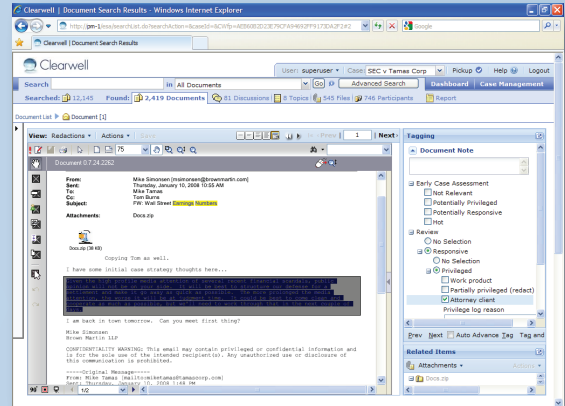
Topic Clustering: Utilizes patent-pending linguistic algorithms to automatically organize documents into specific topics, enabling users to quickly analyze all documents related to a particular subject.

People Analytics: Analyze individual and group-to-group communications within a company or to customers, suppliers, and partners. Users can easily access a list of top custodians for a search or monitor communications between regulated and non-regulated divisions.

Term Analytics: Leverage natural language algorithms to analyze noun phrases, which help users uncover secret project names and code words that may be relevant to a case or investigation.

4. REVIEW

Native Viewer: Provides the ability to review documents in their native format without requiring each application to be loaded on a reviewer's workstation. Both text search and hit highlighting within documents are also available, increasing reviewer productivity.



Native viewer: Provides immediate access to documents, attachments, and email threads in native formats, enabling rapid and collaborative review, tagging, and redaction.

Redaction: Enables reviewers to quickly and easily redact documents in multiple colors, apply reason codes, and verify redactions prior to production. Reviewers have the ability to auto-redact keywords, phrases, and personal information, such as names, Social Security numbers, credit card numbers, and phone numbers. Additionally, Clearwell automatically creates a privilege log of all privileged documents for opposing counsel's review.

Decision-Tree Tagging: Creates the ability to tag individual or sets of documents using a multi-layer tree structure. This directs reviewers into key decision points, preventing errors and minimizing the number of clicks needed to accurately tag a document. Customization capabilities allow administrators to create different tag sets and decision-trees and control tag access.

Review Template: Provides customizable tag and folder template that encapsulates best practices from enterprises and law firms.

Nested Folders: Give users the ability to organize document sets intended for processing, search & analysis, review, and production into access controlled folders. Easily customizable folders support both n-level nesting and access control via hidden folders, and provide accurate document counts, simplifying the management of review sets and enabling flexible and collaborative e-discovery workflows.

Optimized Review Interface: Delivers a redesigned user interface that maximizes screen real estate and minimizes mouse clicks to increase review throughput. Dual monitor support, breadcrumb navigation, and thumbnail view allow reviewers to quickly navigate through document sets. A new related items panel increases review speed and consistency by displaying discussion threads, attachments, and tag history for the document being reviewed.



Case Analytics: Easily view case progress and status with real-time graphical reports.

5. PRODUCTION

Native and Image-Based Production: Allows users to produce documents in native, image (TIFF or PDF), and mixed mode formats (e.g. Excel spreadsheets in native, but all others as images). Flexible export options allow for multiple metadata formats (EDRM XML, DAT, CSV, etc.), “reduping” of data by custodian, and preservation of original folder hierarchies.

Integrated Production Folders: Allow review teams to create production sets using the same folder features utilized during review, enabling a highly collaborative approach to building accurate production document sets.

Bates Stamping: Automates the sequential numbering of documents with Bates stamps and supports the application of custom labeling of produced documents using headers and footers.

Rolling Production Support: Enables batch productions at any point in the e-discovery process. Users can track the progress of each production in real-time and view produced document sets within Clearwell in the exact format provided to outside parties.



Clearwell Systems, Inc.
 441 Logue Avenue
 Mountain View, CA 94043
 650.526.0600 tel
 650.526.0699 fax
 www.clearwellsystems.com

6. CASE MANAGEMENT

Case Analytics: Deliver summary reports to monitor case progress, ensuring that resources are properly allocated and deadlines are met. Pre-built case reports display the total number of messages reviewed, un-reviewed, and tagged.

Multi-Case Architecture: Provides 64-bit, distributed, case-based architecture that enables the management of hundreds of cases and thousands of users through a centralized interface. Clearwell provides complete tracking and management capabilities, with case-specific processing, analytics, tags, review sets, and reports.

Case Configuration: Allows case administrators to create cases, manage groups, topics, review sets, decision tree tag structures, and tag values using an intuitive, web-based interface. Clearwell supports multiple case administrators and restricts access with role-based security.

User Management: Enables case administrators to manage user accounts, including user name, password, and role. Administrators can also limit views and restrict access and actions such as tagging and production privileges.

Audit Trail and Activity Reporting: Tracks user actions such as login, logout, search, tag, print, and export, providing a full, reproducible audit trail. Clearwell provides case-specific auditing and automatically produces activity reports for all cases and users.

Clearwell Benefits

The Clearwell E-Discovery Platform is the industry’s first fully integrated product that provides processing, analysis, review, and production capabilities and delivers the following benefits:

- Accelerate early case assessments from weeks to hours
- Cull-down data by up to 90%
- Increase review throughput and consistency
- Reduce movement of data across multiple, disparate tools
- Improve defensibility of the e-discovery process

To learn how Clearwell can deliver value to your organization, contact an e-discovery expert at: info@clearwellsystems.com, or call us at: **877.727.9909**.